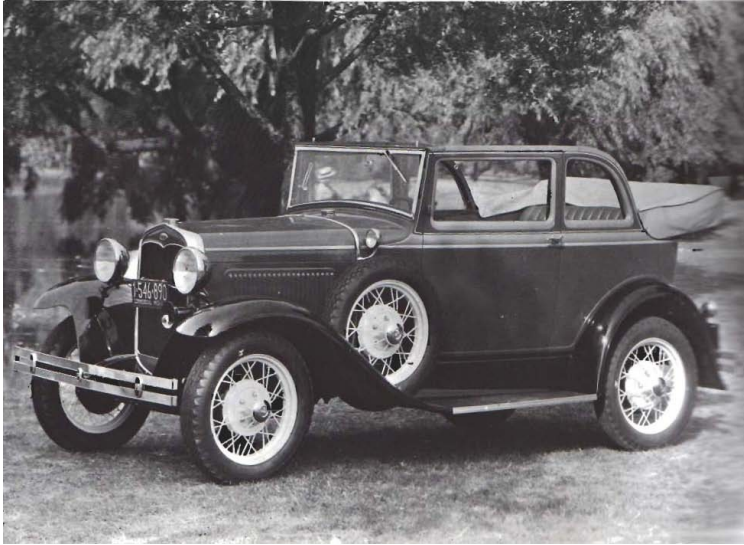


The "A"nnouncer



April, 2021

Newsletter of the Running
Board "A's"

<http://clubs.hemmings.com/runningboardas/>

Volume 20

Number 4

The Running Board “A’s” Officers

President	Doug Pyatt 1419 E. University Ave. Bethlehem, Pa. 18015 610-974-9718
Vice President/Director	Deb Daye 275 Greenfield Rd. Bridgewater, N.J. 08807 908-685-1935
Secretary	Ken Nygard 39 Holland Drive Chalfont, PA 18914 215-822-6717
Treasurer	Peggy Hardy 2012 Perilli Drive Telford PA. 18969 (215) 828-9185
Editor/Publisher	Dave Allison 108 Ervin Rd. Pipersville PA 18947 (267) 733-3708
Web Master	Dick Bettle 170 Crescent Road Florham Park, N.J. 07932 (973) 966-2947

The Running Board “A’s” club is a Model “A” Ford touring club. We are a region of the Model A Restorers Club (MARC). MARC recommends that all region members become members of MARC. See <http://model-a-ford.org/> for more information.

From the Editor

Happy Spring! The weather is finally warming up, the crocuses and daffodils are starting to poke their heads out of the ground and the snow is almost completely gone. I didn't think that was going to happen until sometime in June! With the flowers poking out of the ground, it's also time to let your Model A's poke their bumpers out of the garage.

The Bettles already have two great tours lined up in the next several weeks. The first is a tour of the Millstone River and Weston Canal area of N.J. This should be a great tour and is easy to get to from PA. The Bettles make the trip in the opposite direction to PA all the time, so don't be shy. Sign up for this great event.

The second tour, hosted by the Bettles, is the "Over the River and through the Woods tour. That one will start in Tinicum Park in PA and then head over the Delaware into NJ for a great tour. Details about both tours can be found in the calendar of events in the middle of the newsletter.

I hope most of you have been able to score at least your first shot of Covid vaccine. Diane and I get our second shot on Monday March 29. Yeah!!! There is hope to be able to socialize safely with all of you in the near future.

Finally, have you noticed that gas prices are creeping up? It 's all the more reason to make sure your Model A is in tip top running order. You don't want to buy more of that precious gas than you have to!

Dave

MAFFI Newsletter Minute

March 2021

Would You Like to Serve?

The Model A Ford Foundation is always looking for individuals who love the Model A hobby and are interested in the history of the Era to serve on the MAFFI Board of Trustees. Briefly, the MAFFI board has the responsibility of overseeing the Model A Ford Museum at the Gilmore and encouraging Model A'ers around the country to support the museum through membership in MAFFI and through additional donations to museum operations or the museum Endowment Fund.

The Board meets once a year on the Thursday before Model A Day at the Gilmore which falls on the third Saturday of September. Attendance at the meeting and Model A Day is strongly encouraged. Meetings and business are also conducted through email and conference phone calls so a trustee must have access to a computer for email. We like to have representation on the board from all areas of the country. *We would like to also encourage women to serve on the board.*

A trustee serves for three years and is eligible to serve a second consecutive term if he or she desires. Trustees must be a member in good standing of MAFFI and we strongly encourage each trustee to support both national clubs, MAFCA and MARC through membership as well. We ask that while serving on the MAFFI Board, you do not run for or accept positions on another national club's board. If you think you may be interested in serving on the MAFFI Board, please contact our Executive Director, John Marshall (ExecutiveDirector@maffi.org), or John Begg (President@maffi.org)



A vibrant field of cosmos flowers in shades of pink and yellow, set against a clear, bright blue sky. The flowers are in various stages of bloom, with some fully open and others as buds. The overall scene is bright and cheerful, capturing the essence of a sunny spring day.

Happy
Spring!

Wedding Fashion

As spring begins to blossom, so do thoughts of weddings. In the Model A era, things were no different. The couple below was married in 1929 and the picture is a good study of wedding fashion of the time.



This couple also happens to be family. This is Diane's grandmother and grandfather, George and Anna Fink on their wedding day in 1929.

Tech Tips

As our Model A's emerge from a long winters sleep, make sure you do all of the routine maintenance required to keep your car running in tip top shape. In addition to the obvious such as changing the oil and lubricating the chassis, there are a number of things that are not that obvious and sometimes get overlooked. They include:

- Removing the cover to get access to the throw out bearing and lubricating it.
- Lubricate the throttle linkage that is between the engine and fire wall.
- Lubricate the distributor shaft from both the top and bottom.
- Lubricate the felt pads on the horn.
- Check your tire air pressure, including the spare.
- Check your coolant level.
- Clean the battery terminal connections and any other electrical connections that appear to be corroded.
- Make sure the battery is full. If not add distilled water to bring the electrolyte level up to the full mark.
- Check your windshield wiper for proper operation.
- Check all your lights, **ESPECIALLY THE STOP LIGHTS** for proper operation.
- Check the fluid levels in the rear axle and the transmission.

The above is not meant to be an all inclusive list, but it goes a long way for assuring a pleasant trouble free touring season.

CALENDAR OF EVENTS

Millstone River and Weston Canal Tour

April 17, 2021 (Rain Date April 18)

This tour along the Weston Canal, and Millstone River Scenic Byway is mostly in Somerset County, but also a small portion of Mercer and Middlesex counties. The Byway was designated a New Jersey Scenic Byway in 2001 and Nationally designated in 2009.

The long and narrow Millstone Valley is the flood plain of the Millstone River and its tributaries. A scenic area settled by Europeans in the late 1600's, it was home to the Lenni Lenape people before settlers arrived. The Indian trails, which both paralleled and crossed the river, later became the roadway system for this area, including Canal Road and River Road. The Millstone Valley Scenic Byway Visitor Center is located in the Griggstown Bridgetender's House (potty if we need it).

Masks required when you are out of your own car. Should you choose not to wear a mask, you choose not to come on the tour.

We will have two starting points: First, 170 Crescent Road, Florham Park, N.J. (aka the Bettles house) where there is ample parking; a socially distant deck to wait for others to come;

CALENDAR OF EVENTS

Continued

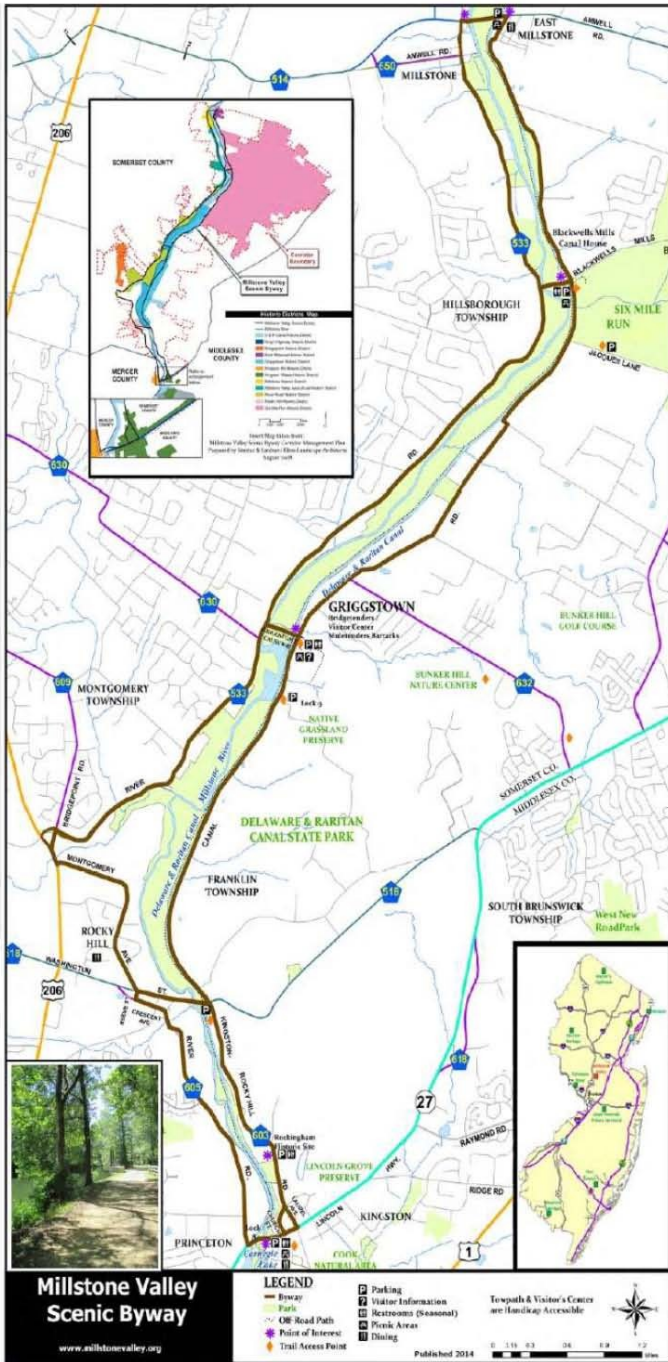
and a potty for those who need it. Meet at 10:00 AM; Leave at 10:15 AM.

Our second meeting place will be at the parking lot for Lock 11 at the start of the Weston Canal Road (169 Canal RD, South Bound Brook, N.J. 08880). Meet at 11:15 AM, Leave at 11:30 AM.

Lunch will be a socially distant, supply your own food, picnic. Bring your own chairs!

Call **908-354-8236** to let us know if you are coming and which starting point you will be at so that we know who is coming, and how many copies of the directions we will need. That number is good on the road.

See a map on the next page



Millstone Valley Scenic Byway

www.millstonevalley.org

CALENDAR OF EVENTS



Over the River and Through the Woods Tour

11 AM-Saturday, May 1, 2021

Rain Date: May 8, 2021

We are planning on running an “Over the River and Through the Woods Tour”. We will start in Tincum Park in Erwinna, Tincum Township PA (behind the John Stover House) and enjoy a nice, leisurely drive through the countryside of Hunterdon and Warren Counties (that’s New Jersey Folks!). Our final stop will be at Jimmy’s Ice Cream, Milford, N.J.

As we still are dealing with COVID 19 restrictions, plan on a “bring your own picnic” for our lunch stop along the route. Hopefully bathroom facilities will be available by then. Please bring your chairs (the picnic spot has a limited number of picnic tables).

Please let us know if you plan to attend by calling 908.354.8236 or emailing us at bobbil70b@gmail.com .

Dick and Bobbi Bettle

The Evolution of Model A Passenger Vehicle Body Styles (Part 2)

Last month, we discussed the various Model A body styles that were offered from the introduction of the Model A in late 1927 through 1929. A total of 17 body styles were offered by the end of 1929. 1930 also saw 17 body styles offered, but they weren't all the same body styles offered in 1929.

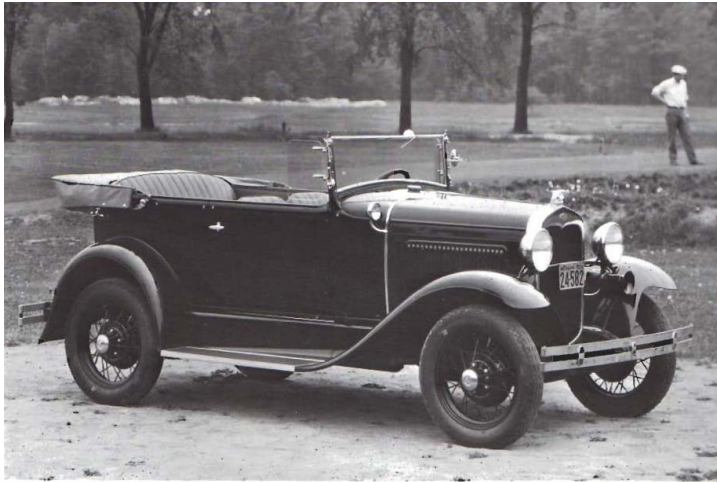
Keep in mind that this was the beginning of the Great Depression, but Henry still thought that there was a strong market for his cars....and he was right.

So what body styles were added in 1930? Check out the chart below.

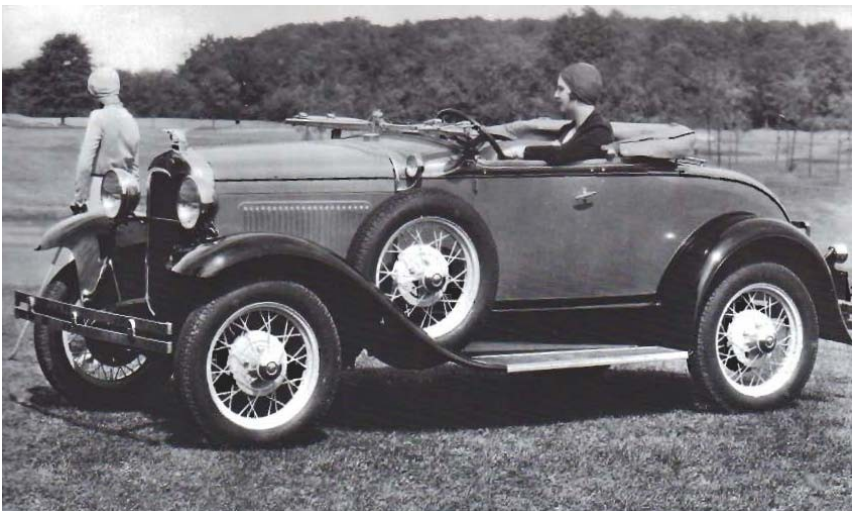
Code Number	Body Style
180-A	Deluxe Phaeton
40-B	Deluxe Roadster
45-B	Deluxe Coupe
170-B	Deluxe Fordor (2 Windows)
190-A	Victoria

The Deluxe Phaeton was introduced in June of 1930. There were a number of upgrades and changes made to the Deluxe Phaeton, but the most notable was the fact that the deluxe model only had two doors, where

the Standard Phaeton in 1930 still had 4 doors. The Deluxe Phaeton can be seen below.



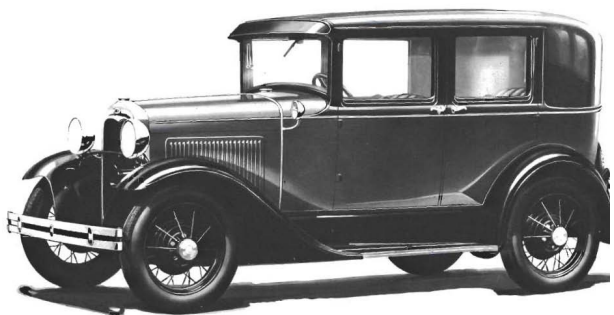
The Deluxe Roadster was also introduced in June of 1930 and was upgraded with a folding windshield, cowl lights and the fender mounted spare. Although not standard, the rumble seat was a popular upgrade as seen below.



The coupe body style for both the standard and deluxe coupe underwent some dramatic changes between 1929 and 1930. The top was lowered somewhat but to keep the same amount of head room, the seat was also lowered the same amount. The differences between the standard and deluxe coupe were mostly in upholstery and the addition of a dome light and cowl lights as seen below.



The Deluxe Fordor sported features like an arm rest in the back seat, but its introduction caused the Standard Fordor to be phased out after only a few months and only about 5200 units being produced.



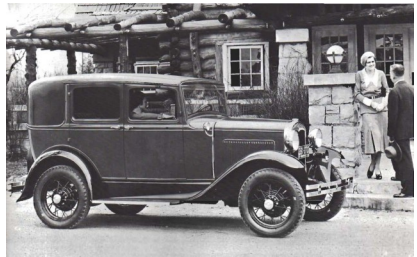
The last new introduction in 1930 was the Victoria.



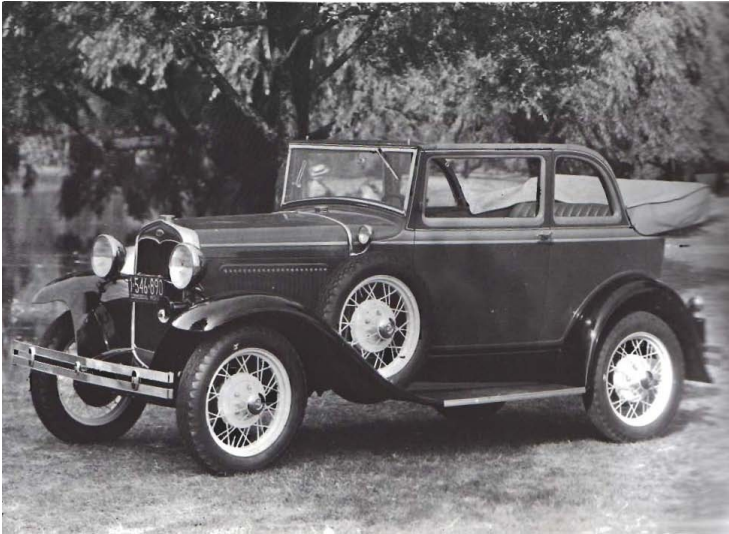
The new body style had a lowered roof line and lower seats to maintain headroom. The body style also allowed for luggage to be stored behind the rear seat. It was introduced in late 1930 and was the first body style to have the two panel painted radiator shell normally found on the 1931 models.

So what was eliminated in 1930? The Special Coupe (49-A) and the Business Coupe (54-A) were eliminated as well as the Leather Back (brown and black Fordor (60-A, 60-B) and the Steel Back Fordor (60-C).

1931 saw the introduction of all of the slant window sedan versions of the Model A. The slanted front window gave the cars a more modern and streamlined look and reduced headlight glare while driving at night.



The final body style Model A that was introduced in 1931 was the Convertible Sedan (400-A). It is now



more commonly referred to as the A-400. There were only 5093 Model A's produced with this body style, so to see one, let alone own one is truly special. That brings us to the end of our discussion of Model A body styles. There is an equally fascinating history of Model A commercial vehicles, with the number of body styles growing through the life span of the Model A. This occurred even though the country sank deeper and deeper into the Great Depression. I hope you enjoyed this brief history of Model A body styles.

Reference; *The Ford Model 'A", a Color, Upholstery and Production Facts Book, Fourth Edition. By George DeAngelis, Edward P. Francis, and Leslie R. Henry.*



**Membership Application
For the Running Board "A's"**

Name _____

Address _____

Telephone Number _____

Email address _____

Dues are \$15.00 annually. Please make checks payable to:

Running Board "A's"

Mail to:

Running Board "A's"

P.O. Box 9

Hilltown Pennsylvania 18927-9711

If renewing, please underline any information that has changed

Running Board "A's"

PO Box 9

Hilltown PA. 18927-9721

First Class Mail