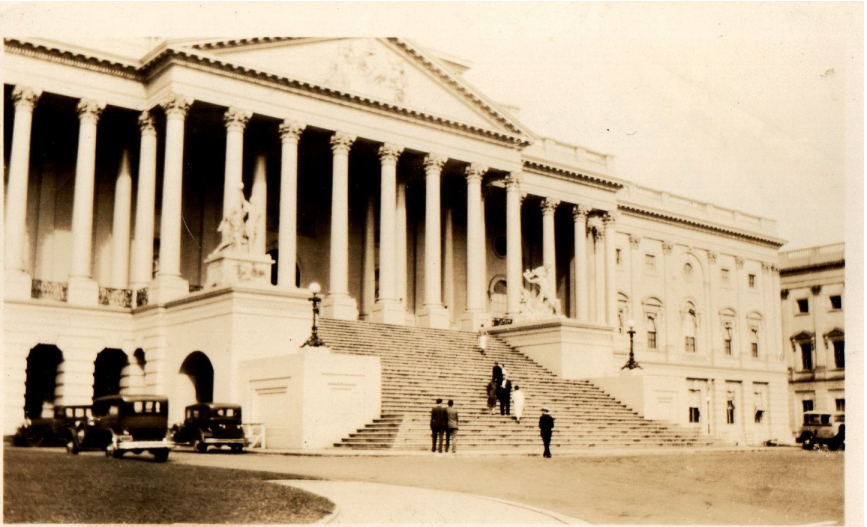


The "A"nnouncer



February, 2021

Newsletter of the Running
Board "A's"

<http://clubs.hemmings.com/runningboardas/>

Volume 20

Number 2

The Running Board “A’s” Officers

| | |
|-------------------------|--|
| President | Doug Pyatt 1419 E. University Ave. Bethlehem, Pa. 18015 610-974-9718 |
| Vice President/Director | Deb Daye 275 Greenfield Rd. Bridgewater, N.J. 08807 908-685-1935 |
| Secretary | Ken Nygard 39 Holland Drive Chalfont, PA 18914 215-822-6717 |
| Treasurer | Peggy Hardy 2012 Perilli Drive Telford PA. 18969 (215) 828-9185 |
| Editor/Publisher | Dave Allison 108 Ervin Rd. Pipersville PA 18947 (267) 733-3708 |
| Web Master | Dick Bettle 170 Crescent Road Florham Park, N.J. 07932 (973) 966-2947 |

The Running Board “A’s” club is a Model “A” Ford touring club. We are a region of the Model A Restorers Club (MARC). MARC recommends that all region members become members of MARC. See <http://model-a-ford.org/> for more information.

From The Editor


Have you noticed that the days are getting longer? In fact, since we are in the month of February, spring is only six weeks away, at least according to the calendar. We'll see what Mother Nature has planned for us.

Please remember that if you haven't paid your dues for 2021 they are due NOW! New members who joined the club after July 1, 2020 are paid up for 2021. Once we get dues from everyone, I will publish a new 2021 club roster for all members. Please help me by making sure you are all paid up. Thanks

Have you been working on your car, have a Model A related story, or Model A era related story, or just a general interest story or topic that you would like to share with the club? How about an idea to share for an event or tour, or even a new recipe. Any of the above would be greatly appreciated, so send me what you have. It doesn't have to be ready to publish. Just a rough draft or even an idea would be most appreciated.

Finally, I hope you all have been able to stay healthy during this pandemic. I know that a few of the members have been scheduled for a vaccination and a couple have even received at least one dose. We are almost a year into the pandemic. There are vaccines on the horizon, but this is no time to let your guard down. Make sure you wear a mask in public and keep your distance from others so we can once again tour down the road together.

Dave



FINAL Notice

Dues are due now. Please make sure they are paid by February 28. They are still only \$15.00. You can make checks payable to the Running Board A's. Send your check to Running Board A's, PO Box 9, Hilltown, PA. 18927

MAFFI Liaison Letter

January 2021

Happy New Year from the Model A Ford Foundation! We are looking forward, as many of you are also, to a better and more active year. Hopefully you have been able to get in your A's and do some driving before the weather makes it impossible. Many clubs have had some "No Contact Tours" which have been nice. We live in a beautiful world and there is no better way to see it than from a Model A!

Last year the Museum had to say goodbye to a beautifully restored Woody belonging to Tim Wiggins that had been on loan to the Museum for several years. As luck would have it, a 1931 Woody has just been donated to the museum by Rob Gibby from Pennsylvania. Rob has owned this car since 1963 while he was in school. We hope to have it safely installed in the Museum by February.

Did you know that you can get a tour of the museum right from the comfort of your own home? Go to our website: www.maffi.org and click on the link "Tours". There is a tour that was filmed in September, led by MAFFI President, John Begg and others. It was focusing on the First Responders Display but also gives you an idea of what's inside. You truly have to see it in person to appreciate all that is there. You could spend an entire day if you looked at every exhibit and read everything. We hope to have other short videos coming soon so check back often.

Thank you for your continued support of the Model A Ford Foundation through your membership and your donations.

Thank you,

Marsha Quesnel, MAFFI Trustee



Editors Note: You may recognize the name ROB GIBBY from previous issues of the *Announcer*. Rob is a life long friend of Bob Outwater. In fact Bob told me that he put about a day's worth of work into the woody wagon above to get it ready to be donated to the museum.

Original Owner

The newest Model A's just turned 90 this year. That's right, the 1931 Model A's turn 90 years old this year. That got me wondering if there are ANY original Model A owners left out there. I'm sure there are plenty of Model A's still in the same family, but sadly, I suspect the original purchaser of the car is not. If you were a member of the Running Board A's prior to 2009, you probably knew an original owner.

Frank Hartmaier was a member of the club who bought his 1929 Model A roadster brand new at the age of 17. At the time, he wanted to learn to fly, but his mother wouldn't allow it. Instead, he put the money that he saved for flying lessons toward the purchase of his roadster. He eventually went on to get his pilots license in 1931. Frank drove his car for almost 80 years. He did everything in his roadster from court his wife to bringing home his baby daughter from the hospital. In the 1940's he had over 400,000 miles on it when the odometer broke. The car was restored by him 4 times and still had the original engine in it!



I remember, in the early 2000's, one January club breakfast in Franconia PA that Frank attended with a lot of other club members. It was well below freezing, so we all

drove modern cars....except Frank. He could not understand how we could have a Model A event without driving our Model A's. Most of our cars even had windows in them and some even had heat, but of course, Frank's car had neither side windows or heat! When Frank passed away in January of 2009, he prearranged to have his car donated to the AACA Museum in Hershey PA. Click [here](#) to see Frank's car and other stories about his Model A in the AACA museum.

Upon his death, Frank also donated the land where he lived to the Natural Lands Trust, where [Stone Hills Preserve](#) was established. Click on the highlighted name of the preserve to see their website. This 13 acre preserve just outside of Pottstown PA is now open to the public with several easy walking trails to take. It sounds like a field trip to me! Diane might even be convinced to do a bird walk!

So what are your plans for your Model A? I consider us all only caretakers of our beloved cars. We are not the first owners, and unless we are buried in them we will probably not be the last owner.

RBA member John Leydon is planning to make a similar donation to MAFFI with his small fleet of Model A's just like Rob Gibby did, as described in the previous article. Prearranging the disposition of your antique car makes a lot of sense once you are done with it. You may have children, nieces, nephews, or friends that may be interested in it or maybe you just want it sold. Leaving an estimated value for the car may be helpful for your heirs and informing them of outlets like Classic Auto Mall or similar venues may also be helpful.

Remember, we are all only caretakers for our cherished rides. They are at least 90 years old and still going strong. Where will they go from here?

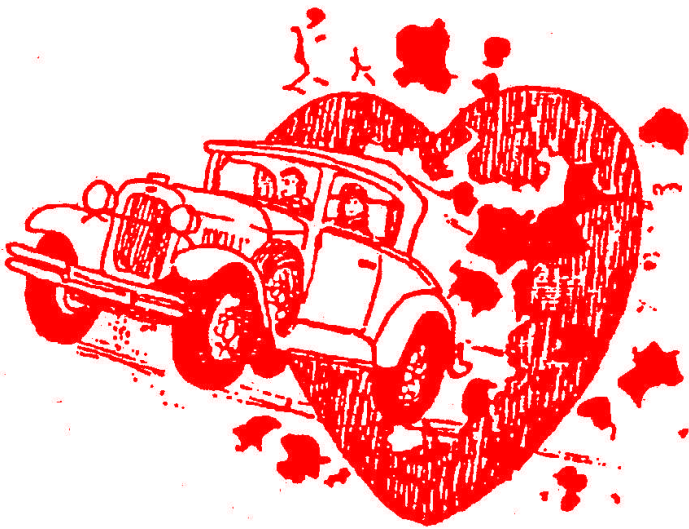
CALENDAR OF EVENTS

The January breakfast, February Chili Cook off and March planning meeting are not going to happen this year, but we may do the Raise Your A Day in April. Also, keep an eye on your email and Calendar of Events in the newsletter.

The Bettles are back at it, planning more tours for us and racking up hundreds of miles on their Model A in the process.

Have no fear, vaccines are coming and we will get through this!

Happy
Valentines
Day



Home Entertainment in the Model T and A Era

We are approaching the middle of winter, which is not my most favorite time of the year. To make matters worse, there is a pandemic raging, so our normal winter time activities such as club breakfasts, visits to museums and tours are out of the question. It got me wondering what life was like during the Model T and A era and beyond. Back then, there were no TV's computers, cell phones, gaming consoles and vehicles that could transport you in virtually any weather to your destination while you stay warm and dry.

There were three main sources of entertainment, movies, radio and sports. Movies were becoming more and more popular, especially after the invention of “talking” movies in 1927. Film making moved from NY City to Los Angles because of the nicer weather, causing more and more movie studios to pop up, giving the viewer more and more choices to watch. Movie theaters were not like the ones today. They were grand ornate structures, that really made the movie goers feel like something special.



Sports were another source of entertainment at the time. Baseball, Football, Basketball and Boxing were probably the biggest sports of the time. This was the era of Babe Ruth and Ty Cobb, Johnny Weissmuller and Joe Lewis.



Radio was one of the few sources of live entertainment in the home and new for most people. Not everyone could get out to see a movie or sporting event live, so radio brought news and sports into the home. Movies could not be brought into the home in this era (no Netflix or Hulu) but radio shows were the next best thing. These shows told stories that let the listener's imagination run wild. (Think -War of the Worlds by Orson Wells in 1938). My mother always told the story of listening to War of the Worlds on the radio when it was first broadcast. The story of aliens invading earth sounded so real because they were using local landmarks in NYC and North Jersey. She begged my grandfather to do something to get ready for the invasion. His "preparation" was to run to the corner gas station and put 50 cents worth of gas in the car.

Radios were the only way to bring entertainment from the outside world into the home. Keep in mind that these radios were not the small unobtrusive digital wonders that they are today. Back in the day, a radio was usually a fairly large piece of furniture. In some cases there were table top units, but even they were

large compared to today's standards. They were a fixture in the living room where the whole family could sit around and listen to their favorite shows. I'm sure that back then there were times when there was just "nothing good" on the radio. We have that now with over 200 channels on the TV and there is still *nothing to watch!!*



Some families turned to music, played and sung in the home as an alternative to the radio. Many homes had pianos, much to the displeasure of small children in the house who were forced to take piano lessons from a very young age.

Upright piano's were very popular because they were much smaller and less expensive than a grand piano, so they would fit not only in the home, but in the home budget much more easily. Player piano's were also popular because you didn't need to know how to play a piano to listen to it.



During the era of the 20's and 30's jazz music was becoming more and more popular, so there was a market for other instruments to be played along with the

piano in the home. A saxophone was one of the instruments that comes to mind that was popular in the jazz era. The only problem was that you not only had to be proficient in playing the saxophone when playing with a piano, you also had to know how to transpose music. Most pianos are in the key of C. Saxophones were in different keys depending on which sax you were playing. An alto sax, for instance, is in the key of E flat. This means that if you play a C on the piano and a C on the alto sax, you will be playing two different notes and it will sound horrible. Some instrument companies decided to address this problem by manufacturing and marketing instruments in the key of C to be played with a piano.

The saxophone at right is a relatively rare “C Melody” sax. It was made by the CC Conn Instrument Company. It’s silver plated and the serial number dates it to about 1922. It’s 99 years old this year. It is tuned to the key of C and the sax player can play the same sheet music as a piano player without having to transpose all the notes.

If you didn’t have musical talents, there were still other musical options available to the homeowner such as phonographs.



Popular Mechanics had an ad in their magazine for an E.T. Burrowes pool table back in 1915. In the ad, you

could put \$1 down and have a small pool table shipped to you. You would then pay \$1 to \$2 a month until the table was paid for. E.T. Burrowes company started out as a window screen company back in the 1890's They claimed to have window screens in all the best houses in the country. They also branched out into the manufacture of spare wheels for automobiles. These wheels could be attached to the bumper of the car where the flat was, and you could be

BURROWES HOME BILLIARD AND POOL Table \$1 Down



\$1.00 Down puts into your home any Table worth from \$6 to \$15. \$2 a month pays balance. Higher priced Tables on correspondingly easy terms. We supply all cues, balls, etc., free.

Become an Expert at Home

The BURROWES HOME BILLIARD AND POOL TABLE is a scientifically built Combination Table, adapted for the most expert play. It may be set on your dining-room or library table, or mounted on legs or stand. When not in use it may be set aside out of the way.

NO RED TAPE—On receipt of first installment we will ship Table. Play on it one week. If unsatisfactory return it, and we will refund money. Write to-day for catalogue.

THE E. T. BURROWES CO., 62 Spring St., Portland, Me.

on your way again.

They also found a market for home pool and billiard tables. They had an extensive catalog of tables of various sizes to meet the needs of almost any household. Their tables did not have slate in them like other pool tables. Instead, the table had a series of steel supports that supported a much lighter composite table top,

81

BURROWES COMBINATION DINING-BILLIARD-POOL TABLES
(Continued)

SPECIFICATIONS

Style—Six Protection Patented, adapted for Billiards and Pool.

Size—Of Dining Table, 48, 54, 60, 66, 72, 78, 84, 90, 96, 102, 108, 114, 120, 126, 132, 138, 144, 150, 156, 162, 168, 174, 180, 186, 192, 198, 204, 210, 216, 222, 228, 234, 240, 246, 252, 258, 264, 270, 276, 282, 288, 294, 300, 306, 312, 318, 324, 330, 336, 342, 348, 354, 360, 366, 372, 378, 384, 390, 396, 402, 408, 414, 420, 426, 432, 438, 444, 450, 456, 462, 468, 474, 480, 486, 492, 498, 504, 510, 516, 522, 528, 534, 540, 546, 552, 558, 564, 570, 576, 582, 588, 594, 600, 606, 612, 618, 624, 630, 636, 642, 648, 654, 660, 666, 672, 678, 684, 690, 696, 702, 708, 714, 720, 726, 732, 738, 744, 750, 756, 762, 768, 774, 780, 786, 792, 798, 804, 810, 816, 822, 828, 834, 840, 846, 852, 858, 864, 870, 876, 882, 888, 894, 900, 906, 912, 918, 924, 930, 936, 942, 948, 954, 960, 966, 972, 978, 984, 990, 996, 1002, 1008, 1014, 1020, 1026, 1032, 1038, 1044, 1050, 1056, 1062, 1068, 1074, 1080, 1086, 1092, 1098, 1104, 1110, 1116, 1122, 1128, 1134, 1140, 1146, 1152, 1158, 1164, 1170, 1176, 1182, 1188, 1194, 1200, 1206, 1212, 1218, 1224, 1230, 1236, 1242, 1248, 1254, 1260, 1266, 1272, 1278, 1284, 1290, 1296, 1302, 1308, 1314, 1320, 1326, 1332, 1338, 1344, 1350, 1356, 1362, 1368, 1374, 1380, 1386, 1392, 1398, 1404, 1410, 1416, 1422, 1428, 1434, 1440, 1446, 1452, 1458, 1464, 1470, 1476, 1482, 1488, 1494, 1500, 1506, 1512, 1518, 1524, 1530, 1536, 1542, 1548, 1554, 1560, 1566, 1572, 1578, 1584, 1590, 1596, 1602, 1608, 1614, 1620, 1626, 1632, 1638, 1644, 1650, 1656, 1662, 1668, 1674, 1680, 1686, 1692, 1698, 1704, 1710, 1716, 1722, 1728, 1734, 1740, 1746, 1752, 1758, 1764, 1770, 1776, 1782, 1788, 1794, 1800, 1806, 1812, 1818, 1824, 1830, 1836, 1842, 1848, 1854, 1860, 1866, 1872, 1878, 1884, 1890, 1896, 1902, 1908, 1914, 1920, 1926, 1932, 1938, 1944, 1950, 1956, 1962, 1968, 1974, 1980, 1986, 1992, 1998, 2004, 2010, 2016, 2022, 2028, 2034, 2040, 2046, 2052, 2058, 2064, 2070, 2076, 2082, 2088, 2094, 2100, 2106, 2112, 2118, 2124, 2130, 2136, 2142, 2148, 2154, 2160, 2166, 2172, 2178, 2184, 2190, 2196, 2202, 2208, 2214, 2220, 2226, 2232, 2238, 2244, 2250, 2256, 2262, 2268, 2274, 2280, 2286, 2292, 2298, 2304, 2310, 2316, 2322, 2328, 2334, 2340, 2346, 2352, 2358, 2364, 2370, 2376, 2382, 2388, 2394, 2400, 2406, 2412, 2418, 2424, 2430, 2436, 2442, 2448, 2454, 2460, 2466, 2472, 2478, 2484, 2490, 2496, 2502, 2508, 2514, 2520, 2526, 2532, 2538, 2544, 2550, 2556, 2562, 2568, 2574, 2580, 2586, 2592, 2598, 2604, 2610, 2616, 2622, 2628, 2634, 2640, 2646, 2652, 2658, 2664, 2670, 2676, 2682, 2688, 2694, 2700, 2706, 2712, 2718, 2724, 2730, 2736, 2742, 2748, 2754, 2760, 2766, 2772, 2778, 2784, 2790, 2796, 2802, 2808, 2814, 2820, 2826, 2832, 2838, 2844, 2850, 2856, 2862, 2868, 2874, 2880, 2886, 2892, 2898, 2904, 2910, 2916, 2922, 2928, 2934, 2940, 2946, 2952, 2958, 2964, 2970, 2976, 2982, 2988, 2994, 3000, 3006, 3012, 3018, 3024, 3030, 3036, 3042, 3048, 3054, 3060, 3066, 3072, 3078, 3084, 3090, 3096, 3102, 3108, 3114, 3120, 3126, 3132, 3138, 3144, 3150, 3156, 3162, 3168, 3174, 3180, 3186, 3192, 3198, 3204, 3210, 3216, 3222, 3228, 3234, 3240, 3246, 3252, 3258, 3264, 3270, 3276, 3282, 3288, 3294, 3300, 3306, 3312, 3318, 3324, 3330, 3336, 3342, 3348, 3354, 3360, 3366, 3372, 3378, 3384, 3390, 3396, 3402, 3408, 3414, 3420, 3426, 3432, 3438, 3444, 3450, 3456, 3462, 3468, 3474, 3480, 3486, 3492, 3498, 3504, 3510, 3516, 3522, 3528, 3534, 3540, 3546, 3552, 3558, 3564, 3570, 3576, 3582, 3588, 3594, 3600, 3606, 3612, 3618, 3624, 3630, 3636, 3642, 3648, 3654, 3660, 3666, 3672, 3678, 3684, 3690, 3696, 3702, 3708, 3714, 3720, 3726, 3732, 3738, 3744, 3750, 3756, 3762, 3768, 3774, 3780, 3786, 3792, 3798, 3804, 3810, 3816, 3822, 3828, 3834, 3840, 3846, 3852, 3858, 3864, 3870, 3876, 3882, 3888, 3894, 3900, 3906, 3912, 3918, 3924, 3930, 3936, 3942, 3948, 3954, 3960, 3966, 3972, 3978, 3984, 3990, 3996, 4002, 4008, 4014, 4020, 4026, 4032, 4038, 4044, 4050, 4056, 4062, 4068, 4074, 4080, 4086, 4092, 4098, 4104, 4110, 4116, 4122, 4128, 4134, 4140, 4146, 4152, 4158, 4164, 4170, 4176, 4182, 4188, 4194, 4200, 4206, 4212, 4218, 4224, 4230, 4236, 4242, 4248, 4254, 4260, 4266, 4272, 4278, 4284, 4290, 4296, 4302, 4308, 4314, 4320, 4326, 4332, 4338, 4344, 4350, 4356, 4362, 4368, 4374, 4380, 4386, 4392, 4398, 4404, 4410, 4416, 4422, 4428, 4434, 4440, 4446, 4452, 4458, 4464, 4470, 4476, 4482, 4488, 4494, 4500, 4506, 4512, 4518, 4524, 4530, 4536, 4542, 4548, 4554, 4560, 4566, 4572, 4578, 4584, 4590, 4596, 4602, 4608, 4614, 4620, 4626, 4632, 4638, 4644, 4650, 4656, 4662, 4668, 4674, 4680, 4686, 4692, 4698, 4704, 4710, 4716, 4722, 4728, 4734, 4740, 4746, 4752, 4758, 4764, 4770, 4776, 4782, 4788, 4794, 4800, 4806, 4812, 4818, 4824, 4830, 4836, 4842, 4848, 4854, 4860, 4866, 4872, 4878, 4884, 4890, 4896, 4902, 4908, 4914, 4920, 4926, 4932, 4938, 4944, 4950, 4956, 4962, 4968, 4974, 4980, 4986, 4992, 4998, 5004, 5010, 5016, 5022, 5028, 5034, 5040, 5046, 5052, 5058, 5064, 5070, 5076, 5082, 5088, 5094, 5100, 5106, 5112, 5118, 5124, 5130, 5136, 5142, 5148, 5154, 5160, 5166, 5172, 5178, 5184, 5190, 5196, 5202, 5208, 5214, 5220, 5226, 5232, 5238, 5244, 5250, 5256, 5262, 5268, 5274, 5280, 5286, 5292, 5298, 5304, 5310, 5316, 5322, 5328, 5334, 5340, 5346, 5352, 5358, 5364, 5370, 5376, 5382, 5388, 5394, 5400, 5406, 5412, 5418, 5424, 5430, 5436, 5442, 5448, 5454, 5460, 5466, 5472, 5478, 5484, 5490, 5496, 5502, 5508, 5514, 5520, 5526, 5532, 5538, 5544, 5550, 5556, 5562, 5568, 5574, 5580, 5586, 5592, 5598, 5604, 5610, 5616, 5622, 5628, 5634, 5640, 5646, 5652, 5658, 5664, 5670, 5676, 5682, 5688, 5694, 5700, 5706, 5712, 5718, 5724, 5730, 5736, 5742, 5748, 5754, 5760, 5766, 5772, 5778, 5784, 5790, 5796, 5802, 5808, 5814, 5820, 5826, 5832, 5838, 5844, 5850, 5856, 5862, 5868, 5874, 5880, 5886, 5892, 5898, 5904, 5910, 5916, 5922, 5928, 5934, 5940, 5946, 5952, 5958, 5964, 5970, 5976, 5982, 5988, 5994, 6000, 6006, 6012, 6018, 6024, 6030, 6036, 6042, 6048, 6054, 6060, 6066, 6072, 6078, 6084, 6090, 6096, 6102, 6108, 6114, 6120, 6126, 6132, 6138, 6144, 6150, 6156, 6162, 6168, 6174, 6180, 6186, 6192, 6198, 6204, 6210, 6216, 6222, 6228, 6234, 6240, 6246, 6252, 6258, 6264, 6270, 6276, 6282, 6288, 6294, 6300, 6306, 6312, 6318, 6324, 6330, 6336, 6342, 6348, 6354, 6360, 6366, 6372, 6378, 6384, 6390, 6396, 6402, 6408, 6414, 6420, 6426, 6432, 6438, 6444, 6450, 6456, 6462, 6468, 6474, 6480, 6486, 6492, 6498, 6504, 6510, 6516, 6522, 6528, 6534, 6540, 6546, 6552, 6558, 6564, 6570, 6576, 6582, 6588, 6594, 6600, 6606, 6612, 6618, 6624, 6630, 6636, 6642, 6648, 6654, 6660, 6666, 6672, 6678, 6684, 6690, 6696, 6702, 6708, 6714, 6720, 6726, 6732, 6738, 6744, 6750, 6756, 6762, 6768, 6774, 6780, 6786, 6792, 6798, 6804, 6810, 6816, 6822, 6828, 6834, 6840, 6846, 6852, 6858, 6864, 6870, 6876, 6882, 6888, 6894, 6900, 6906, 6912, 6918, 6924, 6930, 6936, 6942, 6948, 6954, 6960, 6966, 6972, 6978, 6984, 6990, 6996, 7002, 7008, 7014, 7020, 7026, 7032, 7038, 7044, 7050, 7056, 7062, 7068, 7074, 7080, 7086, 7092, 7098, 7104, 7110, 7116, 7122, 7128, 7134, 7140, 7146, 7152, 7158, 7164, 7170, 7176, 7182, 7188, 7194, 7200, 7206, 7212, 7218, 7224, 7230, 7236, 7242, 7248, 7254, 7260, 7266, 7272, 7278, 7284, 7290, 7296, 7302, 7308, 7314, 7320, 7326, 7332, 7338, 7344, 7350, 7356, 7362, 7368, 7374, 7380, 7386, 7392, 7398, 7404, 7410, 7416, 7422, 7428, 7434, 7440, 7446, 7452, 7458, 7464, 7470, 7476, 7482, 7488, 7494, 7500, 7506, 7512, 7518, 7524, 7530, 7536, 7542, 7548, 7554, 7560, 7566, 7572, 7578, 7584, 7590, 7596, 7602, 7608, 7614, 7620, 7626, 7632, 7638, 7644, 7650, 7656, 7662, 7668, 7674, 7680, 7686, 7692, 7698, 7704, 7710, 7716, 7722, 7728, 7734, 7740, 7746, 7752, 7758, 7764, 7770, 7776, 7782, 7788, 7794, 7800, 7806, 7812, 7818, 7824, 7830, 7836, 7842, 7848, 7854, 7860, 7866, 7872, 7878, 7884, 7890, 7896, 7902, 7908, 7914, 7920, 7926, 7932, 7938, 7944, 7950, 7956, 7962, 7968, 7974, 7980, 7986, 7992, 7998, 8004, 8010, 8016, 8022, 8028, 8034, 8040, 8046, 8052, 8058, 8064, 8070, 8076, 8082, 8088, 8094, 8100, 8106, 8112, 8118, 8124, 8130, 8136, 8142, 8148, 8154, 8160, 8166, 8172, 8178, 8184, 8190, 8196, 8202, 8208, 8214, 8220, 8226, 8232, 8238, 8244, 8250, 8256, 8262, 8268, 8274, 8280, 8286, 8292, 8298, 8304, 8310, 8316, 8322, 8328, 8334, 8340, 8346, 8352, 8358, 8364, 8370, 8376, 8382, 8388, 8394, 8400, 8406, 8412, 8418, 8424, 8430, 8436, 8442, 8448, 8454, 8460, 8466, 8472, 8478, 8484, 8490, 8496, 8502, 8508, 8514, 8520, 8526, 8532, 8538, 8544, 8550, 8556, 8562, 8568, 8574, 8580, 8586, 8592, 8598, 8604, 8610, 8616, 8622, 8628, 8634, 8640, 8646, 8652, 8658, 8664, 8670, 8676, 8682, 8688, 8694, 8700, 8706, 8712, 8718, 8724, 8730, 8736, 8742, 8748, 8754, 8760, 8766, 8772, 8778, 8784, 8790, 8796, 8802, 8808, 8814, 8820, 8826, 8832, 8838, 8844, 8850, 8856, 8862, 8868, 8874, 8880, 8886, 8892, 8898, 8904, 8910, 8916, 8922, 8928, 8934, 8940, 8946, 8952, 8958, 8964, 8970, 8976, 8982, 8988, 8994, 9000, 9006, 9012, 9018, 9024, 9030, 9036, 9042, 9048, 9054, 9060, 9066, 9072, 9078, 9084, 9090, 9096, 9102, 9108, 9114, 9120, 9126, 9132, 9138, 9144, 9150, 9156, 9162, 9168, 9174, 9180, 9186, 9192, 9198, 9204, 9210, 9216, 9222, 9228, 9234, 9240, 9246, 9252, 9258, 9264, 9270, 9276, 9282, 9288, 9294, 9300, 9306, 9312, 9318, 9324, 9330, 9336, 9342, 9348, 9354, 9360, 9366, 9372, 9378, 9384, 9390, 9396, 9402, 9408, 9414, 9420, 9426, 9432, 9438, 9444, 9450, 9456, 9462, 9468, 9474, 9480, 9486, 9492, 9498, 9504, 9510, 9516, 9522, 9528, 9534, 9540, 9546, 9552, 9558, 9564, 9570, 9576, 9582, 9588, 9594, 9600, 9606, 9612, 9618, 9624, 9630, 9636, 9642, 9648, 9654, 9660, 9666, 9672, 9678, 9684, 9690, 9696, 9702, 9708, 9714, 9720, 9726, 9732, 9738, 9744, 9750, 9756, 9762, 9768, 9774, 9780, 9786, 9792, 9798, 9804, 9810, 9816, 9822, 9828, 9834, 9840, 9846, 9852, 9858, 9864, 9870, 9876, 9882, 9888, 9894, 9900, 9906, 9912, 9918, 9924, 9930, 9936, 9942, 9948, 9954, 9960, 9966, 9972, 9978, 9984, 9990, 9996, 10002, 10008, 10014, 10020, 10026, 10032, 10038, 10044, 10050, 10056, 10062, 10068, 10074, 10080, 10086, 10092, 10098, 10104, 10110, 10116, 10122, 10128, 10134, 10140, 10146, 10152, 10158, 10164, 10170, 10176, 10182, 10188, 10194, 10200, 10206, 10212, 10218, 10224, 10230, 10236, 10242, 10248, 10254, 10260, 10266, 10272, 10278, 10284, 10290, 10296, 10302, 10308, 10314, 10320, 10326, 10332, 10338, 10344, 10350, 10356, 10362, 10368, 10374, 10380, 10386, 10392, 10398, 10404, 10410, 10416, 10422, 10428, 10434, 10440, 10446, 10452, 10458, 10464, 10470, 10476, 10482, 10488, 10494, 10500, 10506, 10512, 10518, 10524, 10530, 10536, 10542, 10548, 10554, 10560, 10566, 10572, 10578, 10584, 10590, 10596, 10602, 10608, 10614, 10620, 10626, 10632, 10638, 10644, 10650, 10656, 10662, 10668, 10674, 10680, 10686, 10692, 10698, 10704, 10710, 10716, 10722, 10728, 10734, 10740, 10746, 10752, 10758, 10764, 10770, 10776, 10782, 10788, 10794, 10800, 10806, 10812, 10818, 10824, 10830, 10836, 10842, 10848, 10854, 10860, 10866, 10872, 10878, 10884, 10890, 10896, 10902, 10908, 10914, 10920, 10926, 10932, 10938, 10944, 10950, 10956, 10962, 10968, 10974, 10980, 10986, 10992, 10998, 11004, 11010, 11016, 11022, 11028, 11034, 11040, 11046, 11052, 11058, 11064, 11070, 11076, 11082, 11088, 11094, 11100, 11106, 11112, 11118, 11124, 11130, 11136, 11142, 11148, 11154, 11160, 11166, 11172, 11178, 11184, 11190, 11196, 11202, 11208, 11214, 11220, 11226, 11232, 11238, 11244, 11250, 11256, 11262, 11268, 11274, 11280, 11286, 11292, 11298, 11304, 11310, 11316, 11322, 11328, 11334, 11340, 11346, 11352, 11358, 11364, 11370, 11376, 11382, 11388, 11394, 11400, 11406, 11412, 11418, 11424, 11430, 11436, 11442, 11448, 11454, 11460, 11466, 11472, 11478, 11484, 11490, 11496, 11502, 11508, 11514, 11520, 11526, 11532, 11538, 11544, 11550, 11556, 11562, 11568, 11574, 11580, 11586, 11592, 11598, 11604, 1

making it “portable”. They also had covers for the pool table to turn it into a dining room table, for those that didn’t have the room for a pool table.

In about 1915, Diane’s grandfather, Marion Cole, was a boy of about 15 years old and had a paper route. He decided to purchase one of these tables with his paper route money. He purchased a full size table and he got plenty of use out of his purchase.



It was still being used when he grew up and had a family of his own. In the picture above from the 1940’s are from left to right, Diane’s grandmother, Margaret Cole taking a shot, her father Henry Cole and grandfather Marion Cole looking on and Aunt Jean Cole checking the line up of the pool balls. Unfortunately everyone in the picture has passed away. So what happened to that pool table with fold-ing legs and crocheted corner and side pockets? Well, it’s still in the family, alive and well, and living in my

basement. Over the years, it has moved from Philadelphia to Warminster and now to Pipersville. It has

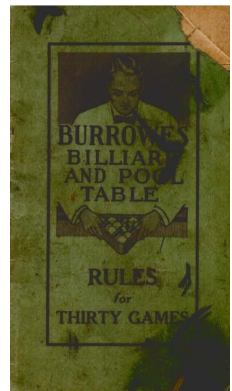


undergone some restoration and we no longer use the original set of pool balls, although we still have

them. The biggest problem was that the bumpers were hard as a rock and needed to be replaced. We did that in the late 90's, but it still has the same crocheted pockets. We still have the original book of rules and 30 games that can be played on the table.



Six generations of the family have now played on this table. If you want to know what I have been doing during quarantine, let's play some pool and I'll show you. The next time you are here for the planning meeting or other event, you'll know that a 106 year old pool table is under your lunch buffet.



Dave



**Membership Application
For the Running Board "A's"**

Name _____

Address _____

Telephone Number _____

Email address _____

Dues are \$15.00 annually. Please make checks payable to:

Running Board "A's"

Mail to:

Running Board "A's"

P.O. Box 9

Hilltown Pennsylvania 18927-9711

If renewing, please underline any information that has changed

Running Board "A's"

PO Box 9

Hilltown PA. 18927-9721

First Class Mail